

FOR SALE

136.93 ACRE DEVELOPMENT SITE

CRABAPPLE RD & WHEELER RD
REIDSVILLE, NC 27320



PROPERTY OVERVIEW

LAND FOR DEVELOPMENT

- + **Total Acreage:** 136.93 Acres
- + **Zoning:** RA
- + **Power:** Duke Energy
- + **Water/Sewer:** Nearby (City of Reidsville)
- + **Natural Gas:** Nearby (Piedmont Natural Gas)
- + **Asking Price:** \$1,337,440
- + Close proximity to Greensboro (17 miles)
- + Norfolk Southern Rail Access



CONTACT US

LYDIA WHITLEY

Assistant Vice President
+1 336 714 0385
lydia.whitley@cbre-triad.com

www.cbre.us/triad

CBRE | Triad
Part of the CBRE affiliate network

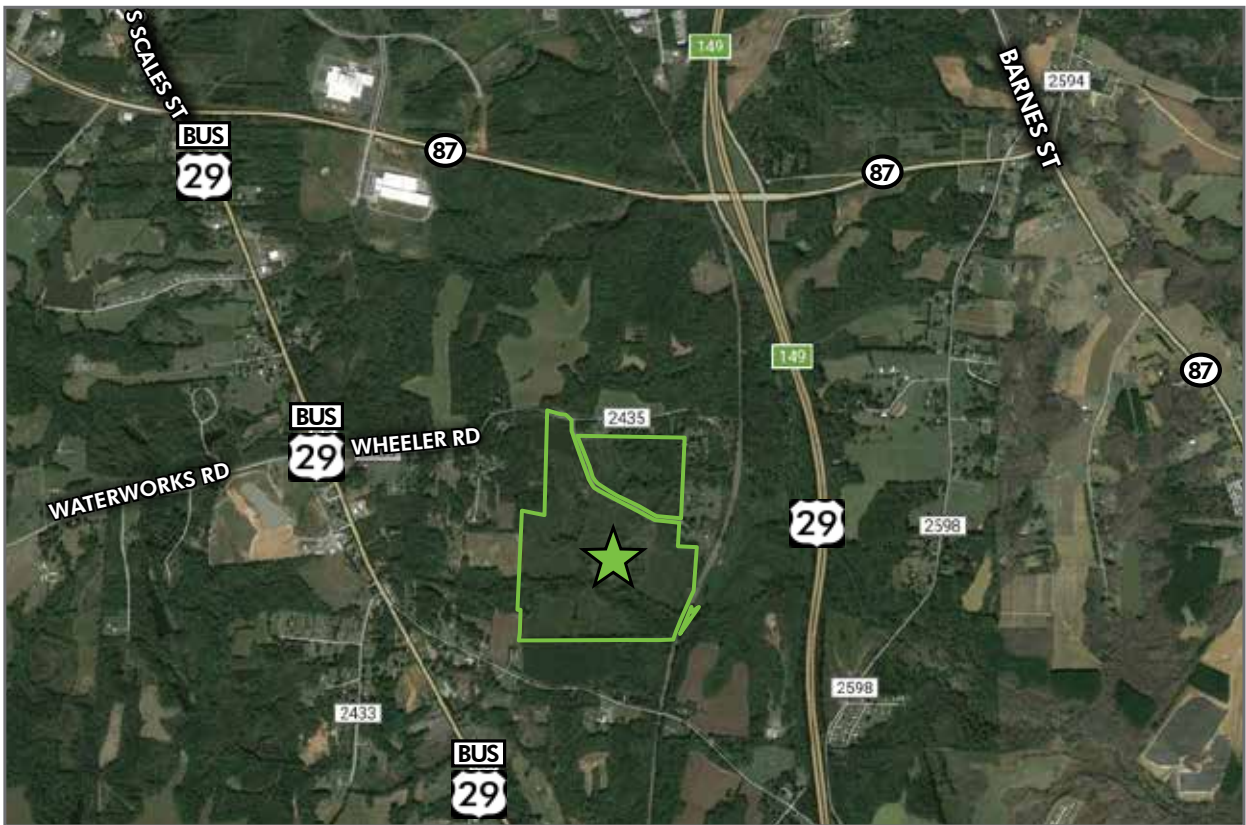
136.93 ACRE DEVELOPMENT SITE

CRABAPPLE RD | REIDSVILLE, NC 27320



PROPERTY OVERVIEW

- + Located at the corner of Wheeler Rd & Crabapple Rd
- + Site includes 136.93 acres (84 acres developable)
- + Includes 2,209' of frontage on Crabapple Rd
- + Versatile site ideal for Industrial, Commercial, Residential or Agricultural
- + 29 acres of hardwoods and 88 acres (planted 2012) in genetically improved Loblolly Pine seedlings
- + Close proximity to Lake Reidsville & Lake Reidsville City Park
- + Easy Access to US-29, Business 29 & Highway 87



Demographics

	1 Mile	3 Mile	5 Mile
2016 Population	269	7,210	21,014
Estimated Households	115	3,053	8,902
Average Household Income	\$36,208	\$56,126	\$50,306

Traffic Counts

Highway 29	22,000 VPD
Highway 29 Business	7,600 VPD

Source: NCDOT

© 2017 CB Richard Ellis-Raleigh LLC, a Delaware limited liability company. The information contained in this document has been obtained from sources believed reliable. While CBRE, Inc. does not doubt its accuracy, CBRE, Inc. has not verified it and makes no guarantee, warranty or representation about it. It is your responsibility to independently confirm its accuracy and completeness. Any projections, opinions, assumptions or estimates used are for example only and do not represent the current or future performance of the property. The value of this transaction to you depends on tax and other factors which should be evaluated by your tax, financial and legal advisors. You and your advisors should conduct a careful, independent investigation of the property to determine to your satisfaction the suitability of the property for your needs. Photos herein are the property of their respective owners and use of these images without the express written consent of the owner is prohibited.

www.cbre.us/triad

CBRE | Triad
Part of the CBRE affiliate network